

S VAGE DESIGN

MADDOX - CONCEPT TO INSTALL

ENGINEERED BEAUTY
SINCE 1910 / SYD - AUS



WHAT TO EXPECT WITH YOUR MADDOX JOURNEY

The Maddox System sets out to blur the line between standard product and custom, making the complex easier for all involved. This starts with our 'Design with Maddox' sheet and ends with the delivery of your Maddox configuration including tailored mark-out and installation guide. All documents are a continuation of Savage Design's dedication to **Engineered Beauty**.

There are 6 stages from concept to install.

1 DESIGN WITH MADDOX

Use our 'Design with Maddox' sheet to create your personalised concept.

Download it from our [website](https://www.savagedesign.com.au), fill it out and send it to hello@savagedesign.com.au

Or call or email our team to help you go through it step by step. +61 2 9681 7223

MADDOX SPECIFICATION SKETCH SHEET EXAMPLE

1 STYLE ☒ WALL STANDING ☐ FREE HANGING

2 FINISHES ☒ FRANK ☒ STAINLESS ☐ BLACKENED STAINLESS

3 HEIGHT **4 BAYS**

Select your situation on the grid below indicating the height, number of bays and number of shelves.

5 SHELVES **MATERIAL TYPE** - One shelf type per Maddox configuration

☒ ALUMINIUM ☐ GLASS

6 ACCESSORY - Note position on sketch with code in brackets

☒ Top Shelf Fence (T) ☐ Draining Glass Back (D) ☐ Bottom Rail (B)

☐ One Rail Shelf (C) ☐ No Shelf (N)

2 QUOTE

Check shipping address is correct

SAVAGE DESIGN

Quotation #2023-0000800

Shipping Address: Norman Road, 123 Top Street, NSW 2000, Australia

Shipping Method: Standard

Description	Qty	Unit Price	Taxes	Amount
1 x Maddox System (Shelf, Glass Back, Draining Glass Back, One Rail Shelf, No Shelf)	1	\$4,750.00	10%	\$5,225.00
Total				\$5,225.00

SHOWROOM: 200 Macquarie Street, Sydney NSW 2000, P: +61 2 9681 7223

FACTORY: 100 Farnham Road, Farnham NSW 2500, P: +61 2 9681 7223

Check all contact details are correct

Using your 'Design with Maddox' sheet, our team will create a quote for your approval.

3 ORDER

Click 'Sign & Pay' to confirm your order. Follow the links for payment methods.

SAVAGE DESIGN

Sign & Pay

Pricing

Products	Quantity	Unit Price	Taxes	Amount
1 x Maddox System (Shelf, Glass Back, Draining Glass Back, One Rail Shelf, No Shelf)	1	\$4,750.00	10%	\$5,225.00
Total				\$5,225.00

Terms & Conditions

Sign & Pay

Using our online portal, follow the links to approve and make payment

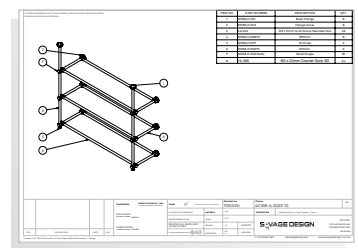
[illegible]

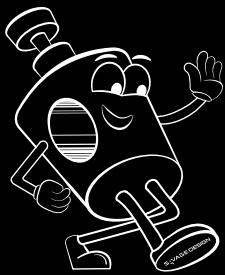
⑤ PRODUCTION

⑥ DELIVERY

[illegible]

Example installation document
sent digitally and printed with
your order.





SHOWROOM

236a RILEY STREET
SURRY HILLS
NSW 2010
AUSTRALIA

FACTORY

102 FAIRFIELD STREET
FAIRFIELD
NSW 2165
AUSTRALIA

WWW.SAVAGEDESIGN.COM.AU

HELLO@SAVAGEDESIGN.COM.AU

+61 2 9681 7223

[@SAVAGEDESIGNSYD](https://www.instagram.com/savage_designsyd)

SAVAGE DESIGN