

S VAGE DESIGN

MADDOX WARDROBE RAIL PRODUCT PROFILE

ENGINEERED BEAUTY
SINCE 1910 / SYD - AUS

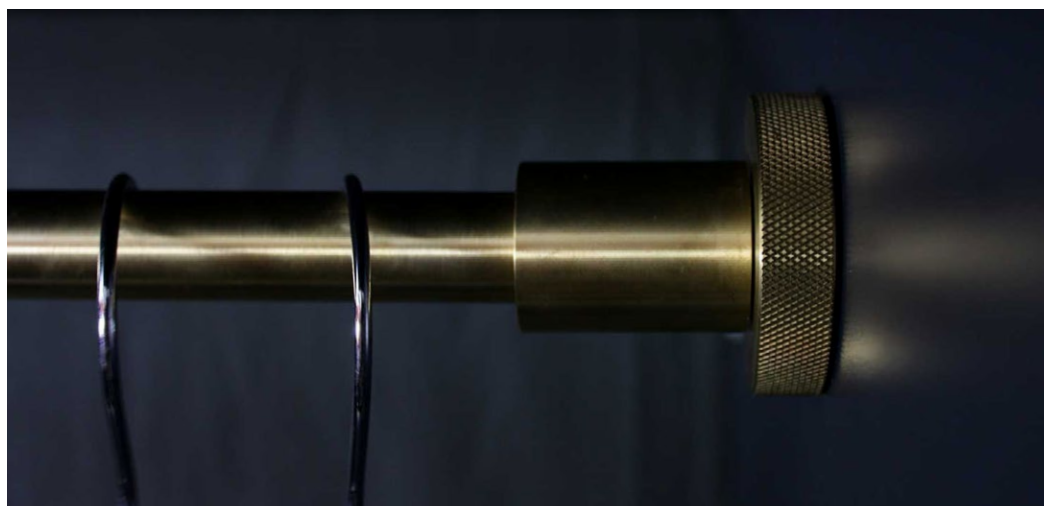
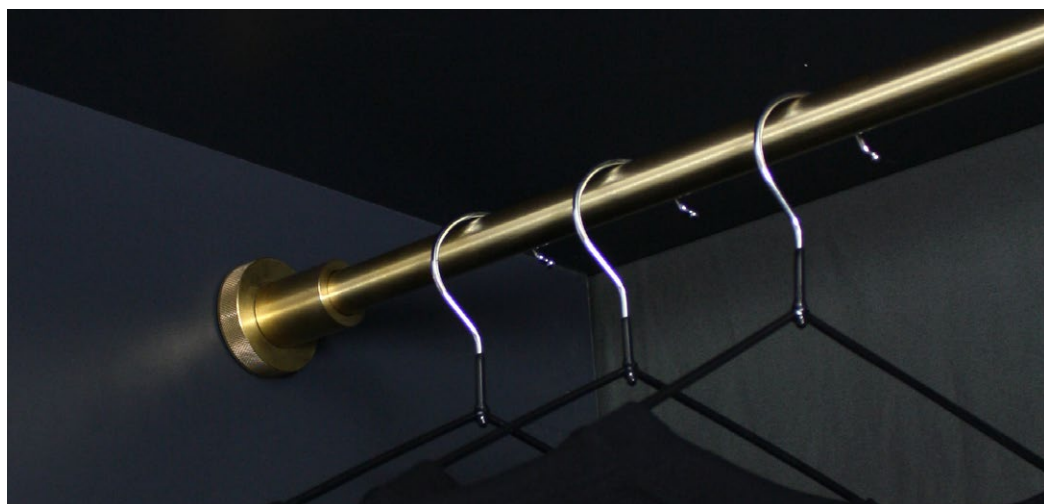


...nisters - of - M

MADDOX WARDROBE RAIL

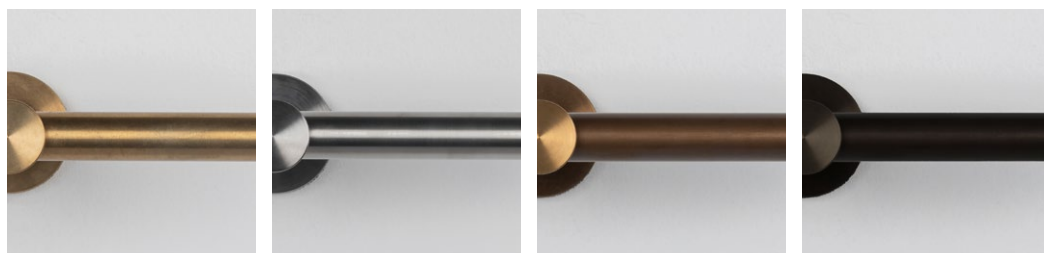
PROFILE

Elevate your wardrobe by introducing **Engineered Beauty** with the Maddox Wardrobe Rail. Your rails can now match your couture, whether it be displayed in a luxury walk-in robe or curated closet. Maddox is crafted from solid stainless steel or solid brass, and available in our signature finishes. This pairs with any of our joinery hardware or Maddox products, ensuring all the metal details in your robe will match. The Maddox System is a carbon neutral product.



FINISHES

Choose from our four signature finishes*



Brass

Stainless Steel

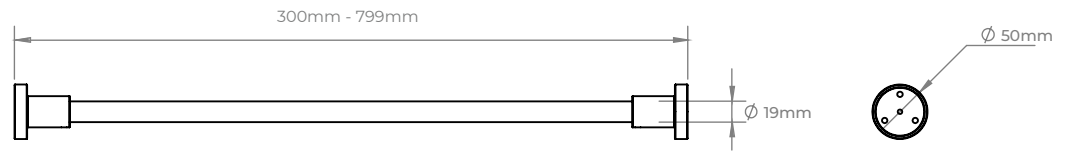
Aged Bronze

Blackened Brass

* Our metals are all living finishes. Find out more here - savagedesign.com.au/portfolio/living_finishes/

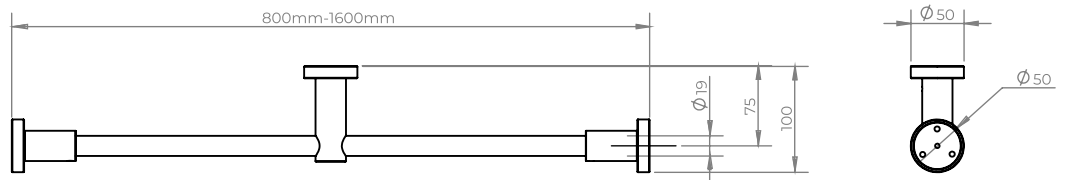
DIMENSIONS

RAILS 300mm - 799mm

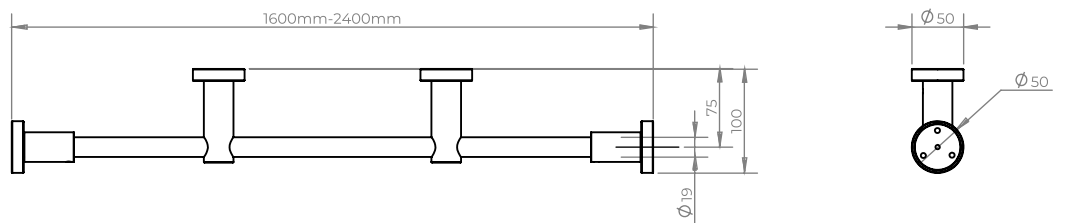


A support is required every 800mm to ensure no bowing of the rail.

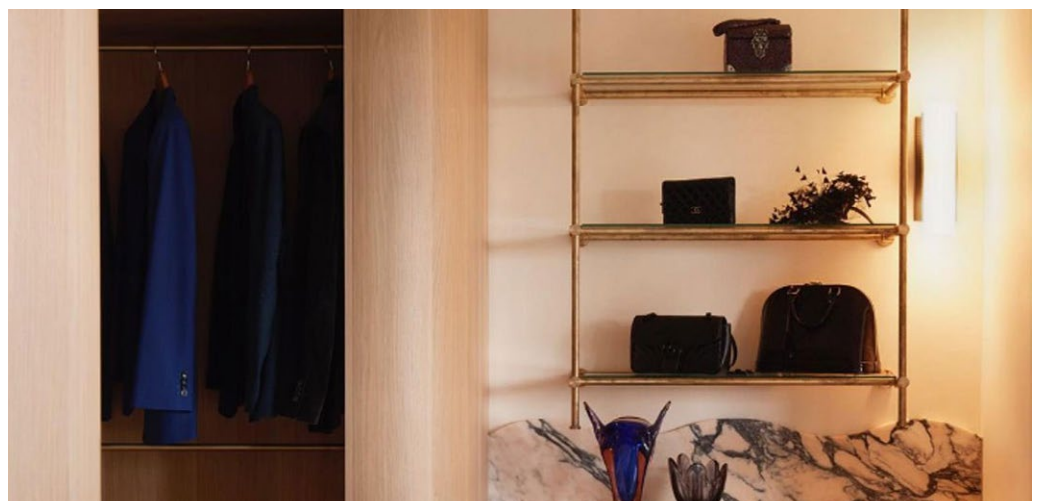
RAILS 800mm - 1599mm



RAILS 1600mm - 2400mm



Maddox Wardrobe Rails and Maddox Shelving Unit in brass



FAQ'S

What is the lead time? All of our items are made to order.
Our lead time is 4 weeks from payment to leaving our factory.

Can I cut down the rail on site? It is not recommended that the rails are cut down. They are made from solid materials and have fine tolerances to fit into the End Bracket.

How much weight can a rail hold? Maddox Wardrobe Rails are rated at 30kg evenly distributed per 800mm. The maximum distance between supports is 800mm.

What surface can i mount the rail to? Whatever Maddox is fixed to, it must have sufficient structure to take the weight of the Maddox unit and items being placed on it.

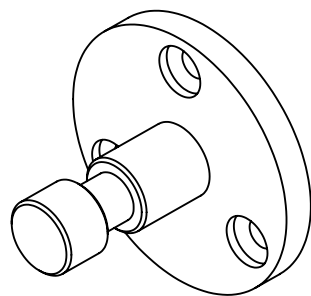
Suitable surfaces may include Timber, Ply or Engineered Timbers, Masonry and Concrete.

CAUTIONS

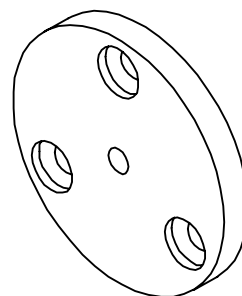
Plasterboard – Requires sufficient timber battens or timber paneling

Tile – Maddox can be fitted to tiles. There needs to be sufficient rigid structure behind the tiled surface for it to be fixed to.

Maddox can not be fixed directly to glass or mirror.



Bush Flange



Surface Flange

Always supplied in Brass

If you have any further questions please contact our sales team
Email - hello@savagedesign.com.au
Call - +61 2 9681 7888 (Mon - Fri 9am - 5pm AEST)



SHOWROOM - Surry Hills
FACTORY - Fairfield
New South Wales, Australia

hello@savagedesign.com.au



S V A G E DESIGN

ENGINEERED BEAUTY
SINCE 1910 / SYD - AUS