

**S VAGE DESIGN**

# DESIGN WITH MADDOX - SHELVING

**ENGINEERED BEAUTY**  
SINCE 1910 / SYD - AUS



## WELCOME TO MADDOX

---

Savage Design introduces the Maddox System, a collection of intersecting components that create a multitude of sleek, visually cohesive architectural solutions. The Maddox System epitomises Savage Design's dedication to **Engineered Beauty**. The Maddox System is a carbon neutral product.



Follow these 5 steps to design your Maddox solution

① STYLE

② FINISHES

③ HEIGHT

④ BAYS

⑤ SHELVES

We have provided a specification sheet to help you design your solution. Send it to our team for a quote.

There is an example specification sketch sheet at the end for your reference.

Maddox components being machined by our engineers in our Sydney factory.

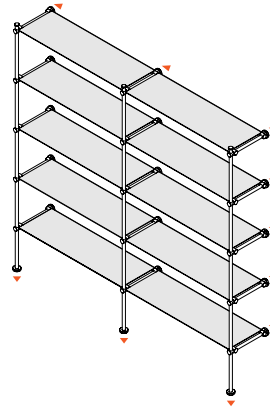


## ① STYLE - Choose your style

### WALL STANDING

Mounted to wall and floor.  
Shelf depth 300mm

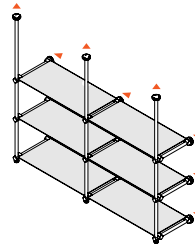
If wall is glass or mirror consider 'free' styles below



### WALL HANGING

Mounted to wall and ceiling.  
Shelf depth 300mm

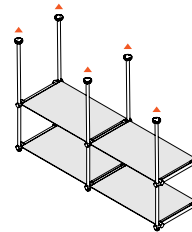
If wall is glass or mirror consider free hanging below



### FREE HANGING

Mounted to ceiling only.  
Shelf depth 330mm

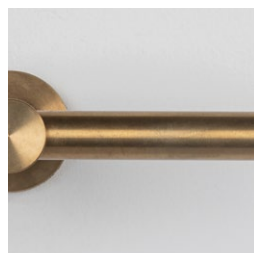
Max drop 1490mm



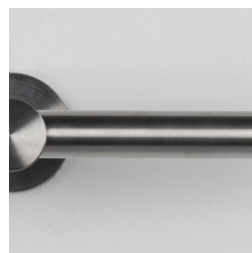
## ② FINISHES - Frame

### FRAME

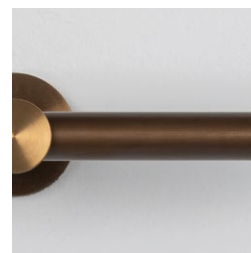
Choose from our four signature finishes\*



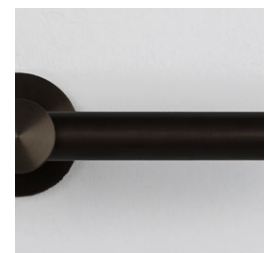
Brass



Stainless Steel



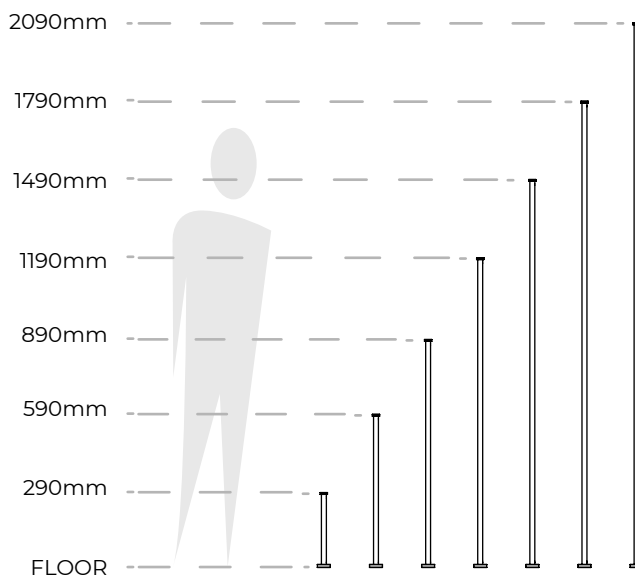
Aged Bronze



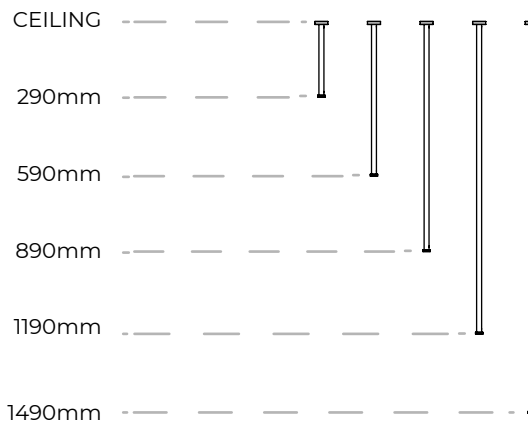
Blackened Brass

### 3 HEIGHT - Select your height

WALL STANDING and  
WALL HANGING  
Choose the height of  
your configuration.



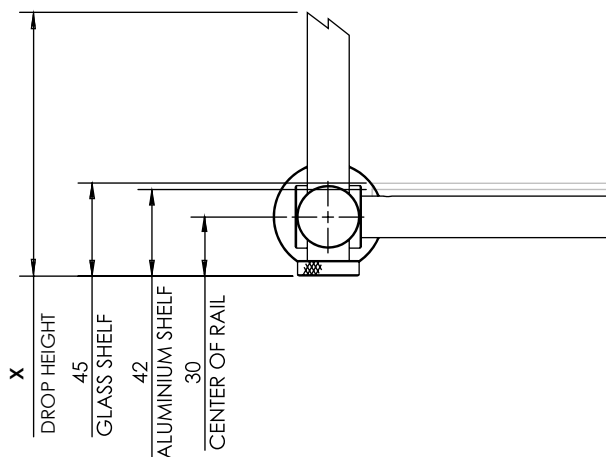
FREE HANGING  
Choose the drop of your  
configuration.



#### SHELF DETAIL

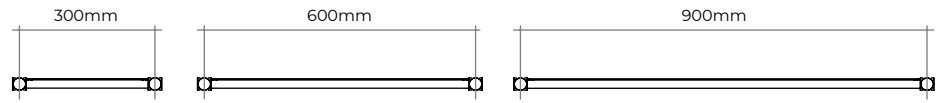
The height of the  
bottom shelf will be at  
least 42mm above the  
over all drop height.

See diagram.

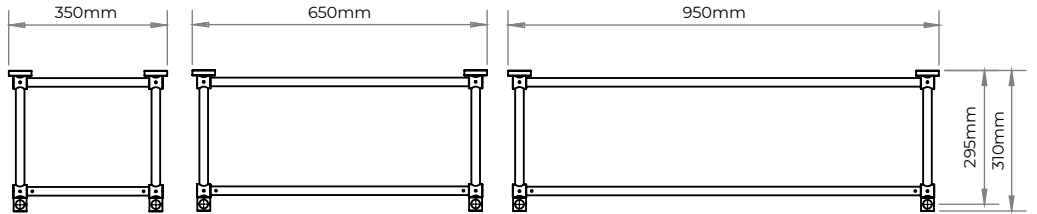


# 4 BAYS - Choose your number

## STANDARD BAY WIDTHS

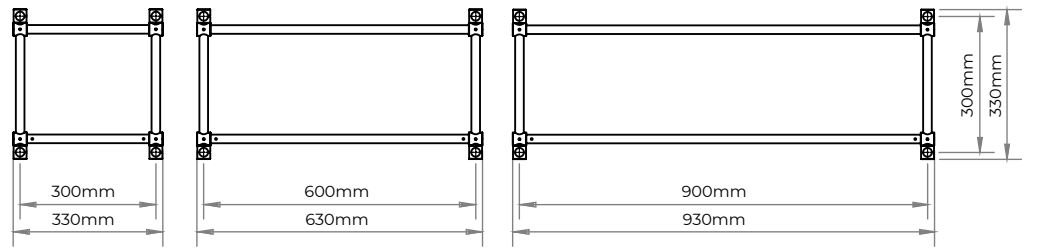


## STANDARD BAY DEPTH



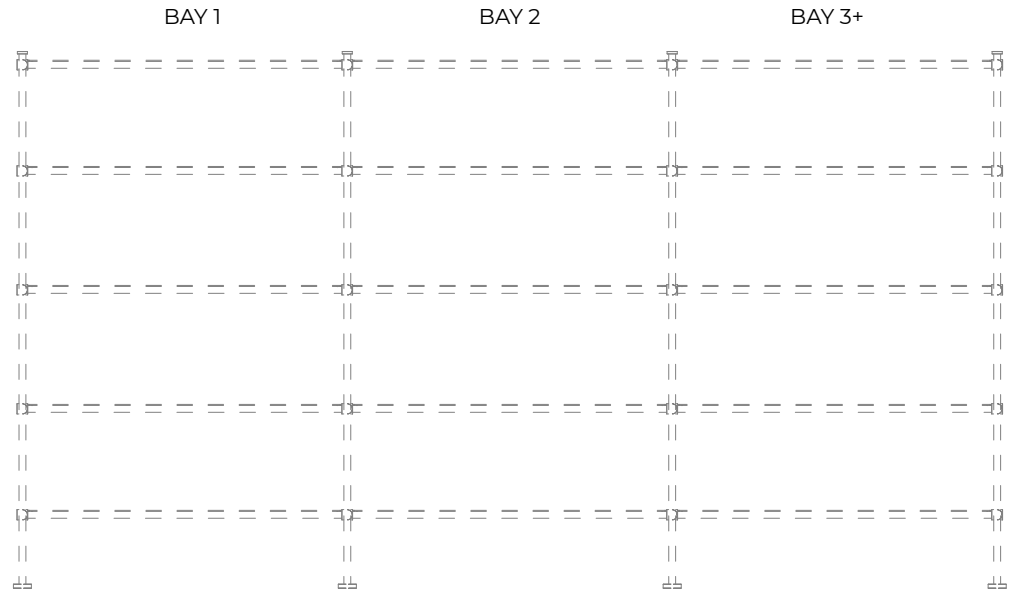
Wall Standing and Wall Hanging

Free Hanging

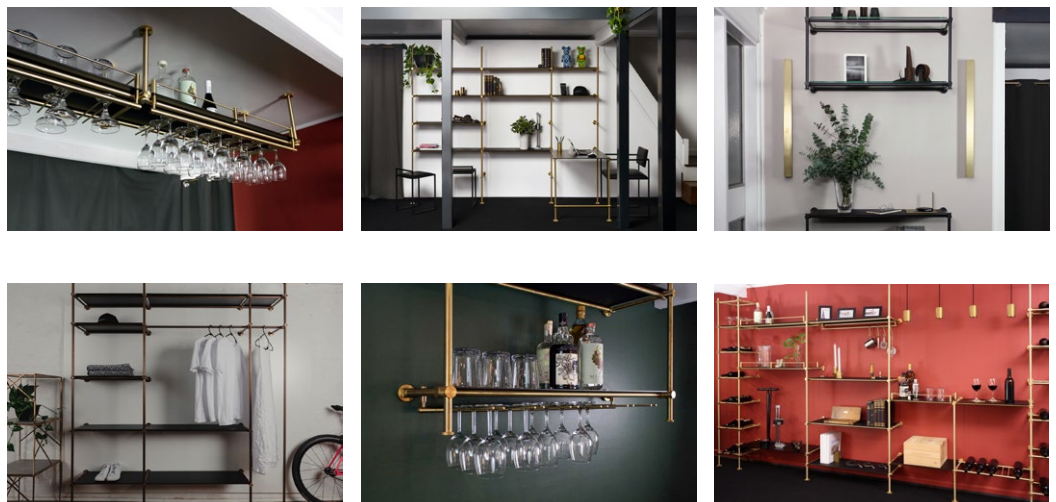


Choose the width and number of bays required.

You can mix widths of bays.



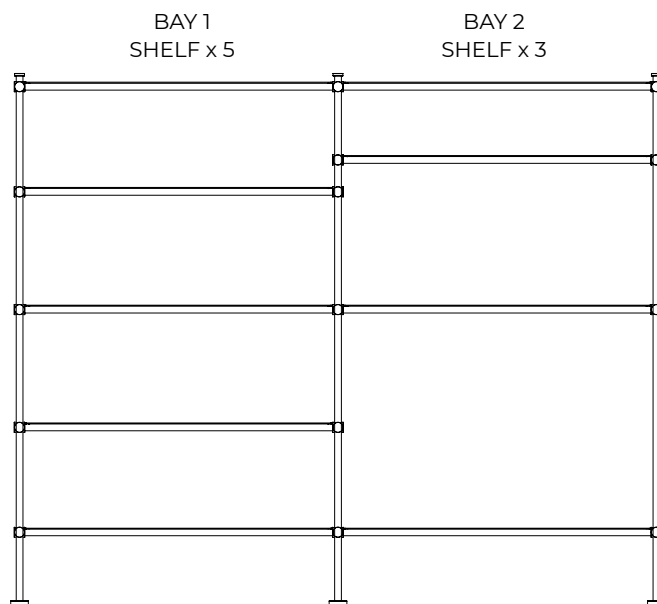
Maddox examples



## 5 SHELVES - Number per bay, Type & Accessory

Choose the number of shelves required per bay and what type of shelf

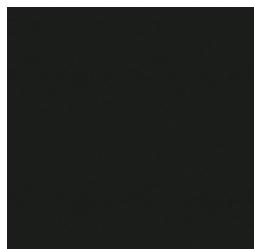
All shelves are approx 300mm deep



### SHELF

Rack bottle Capacity

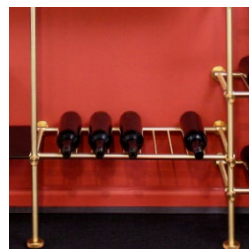
- 300mm - QTY x4
- 600mm - QTY x5
- 900mm - QTY x8



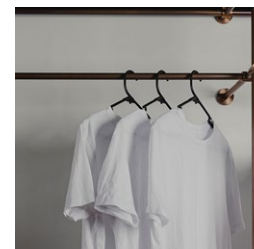
ALUMINIUM  
Powdercoated



GLASS  
Clear float glass with  
retention strip\* to  
match frame finish.



Rack (R)



One Rail Shelf (O)

### ACCESSORY

Drinking glass rack  
details

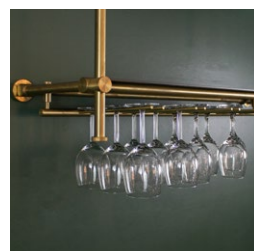
Glasses up to Dia 125mm

Capacity at average  
glass Dia 90mm

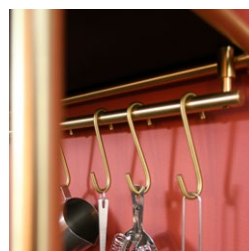
- 300mm QTY x6 glasses
- 600mm QTY x12 glasses
- 900mm QTY x18 glasses



Top Shelf Fence (T)



Drinking Glass Rack (D)



Bottom Rail (B)

# SPECIFICATION SKETCH SHEET

SD Code:

Project:

## 1 STYLE

WALL STANDING

WALL HANGING

FREE HANGING

## 2 FINISHES

FRAME  Brass

Stainless Steel

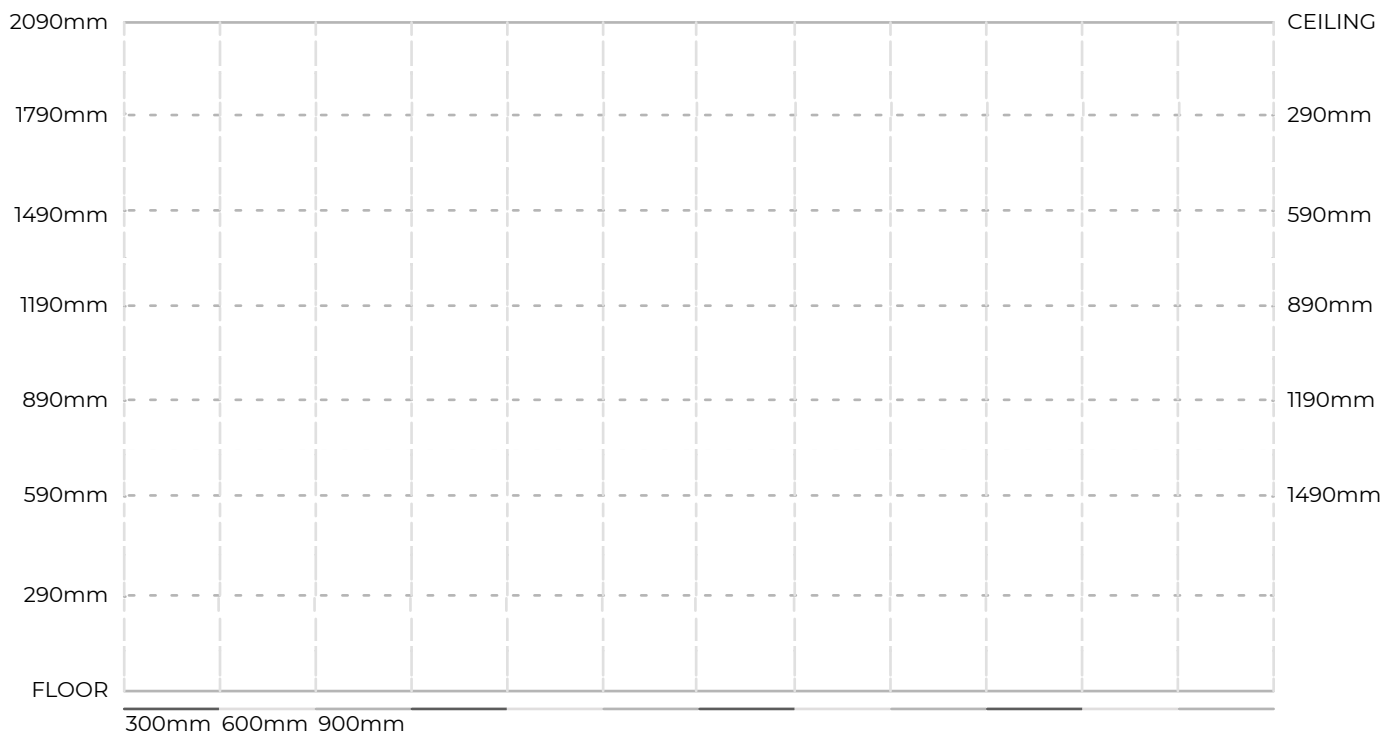
Aged Bronze

Blackened Brass

## 3 HEIGHT

## 4 BAYS

Sketch your elevation on the grid below indicating the height, number of bays and number of shelves.



## 5 SHELVES

TYPE - Note position on sketch with code in brackets

ALUMINIUM  
PC - Textured Black

GLASS  
Frame matched

Rack (R)

One Rail Shelf (O)

No Shelf (NS)

Shelves are approx 300mm deep

ACCESSORY - Note position on sketch with code in brackets

Top Shelf Fence (T)

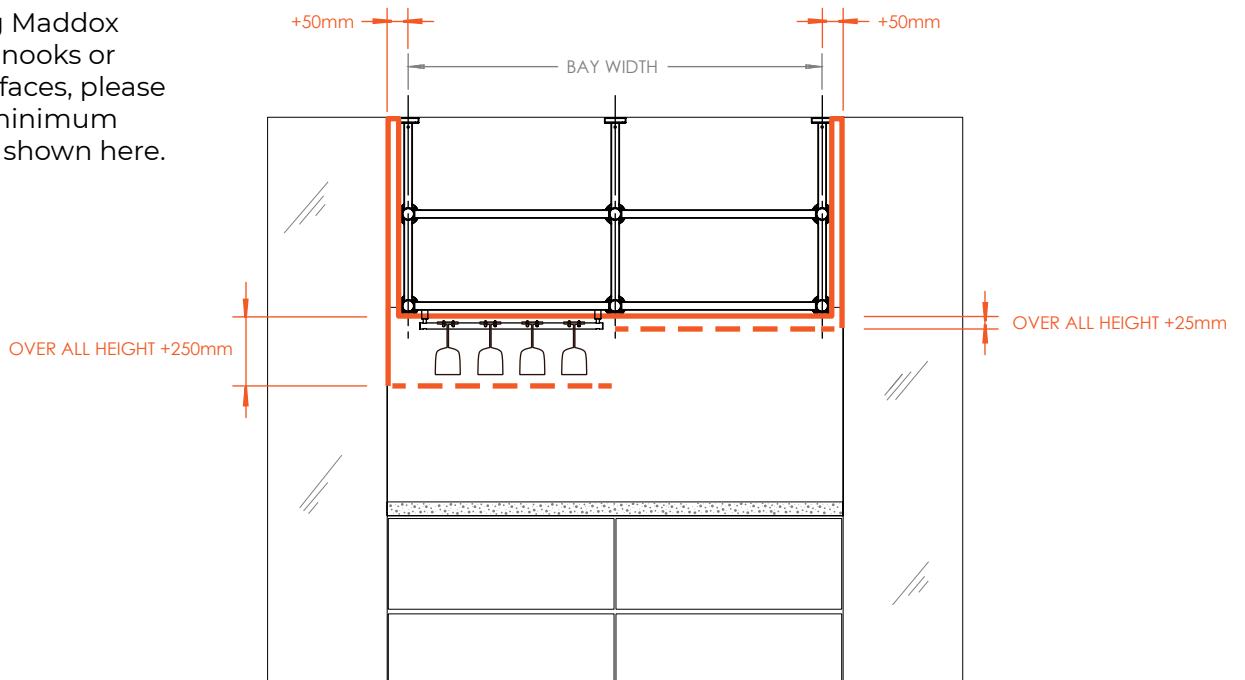
Drinking Glass Rack (D)

Bottom Rail (B)

\* Our metals are all living finishes. Find out more here - [savagedesign.com.au/portfolio/living\\_finishes/](http://savagedesign.com.au/portfolio/living_finishes/)

## RECOMMENDATIONS

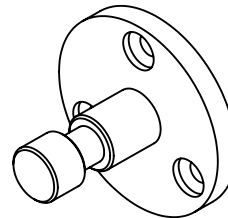
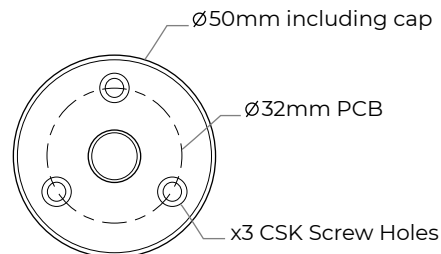
When fitting Maddox into alcoves, nooks or between surfaces, please ensure the minimum clearance as shown here.



Maddox Bush Flange load rating and fixings.

The Maddox Bush Flange is screw fixed to its position. Screws provided are 8G x 20mm to suit most applications.

Longer screws, wall plugs or wall anchors may be needed at installers discretion.



50kg load per Bush Flange

Always supplied in Brass

Bush flange + Cover Cap dimensions

Maddox mounting surfaces.

Whatever Maddox is fixed to, it must have sufficient structure to take the weight of the Maddox unit and items being placed on it.

Suitable surfaces may include Timber, Ply or Engineered Timbers, Masonry and Concrete.

### CAUTIONS

Plasterboard – Requires sufficient timber battens or timber panelling

Tile – Maddox can be fitted to tiles. There needs to be sufficient rigid structure behind the tiled surface for it to be fixed to.

Maddox can not be fixed directly to glass or mirror.

If you have any further questions please contact our sales team  
 Email - [hello@savagedesign.com.au](mailto:hello@savagedesign.com.au)  
 Call - +61 2 9681 7888 (Mon - Fri 9am - 5pm AEST)

# SPECIFICATION SKETCH SHEET EXAMPLE

## 1 STYLE

WALL STANDING

WALL HANGING

FREE HANGING

## 2 FINISHES

FRAME  Brass

Stainless Steel

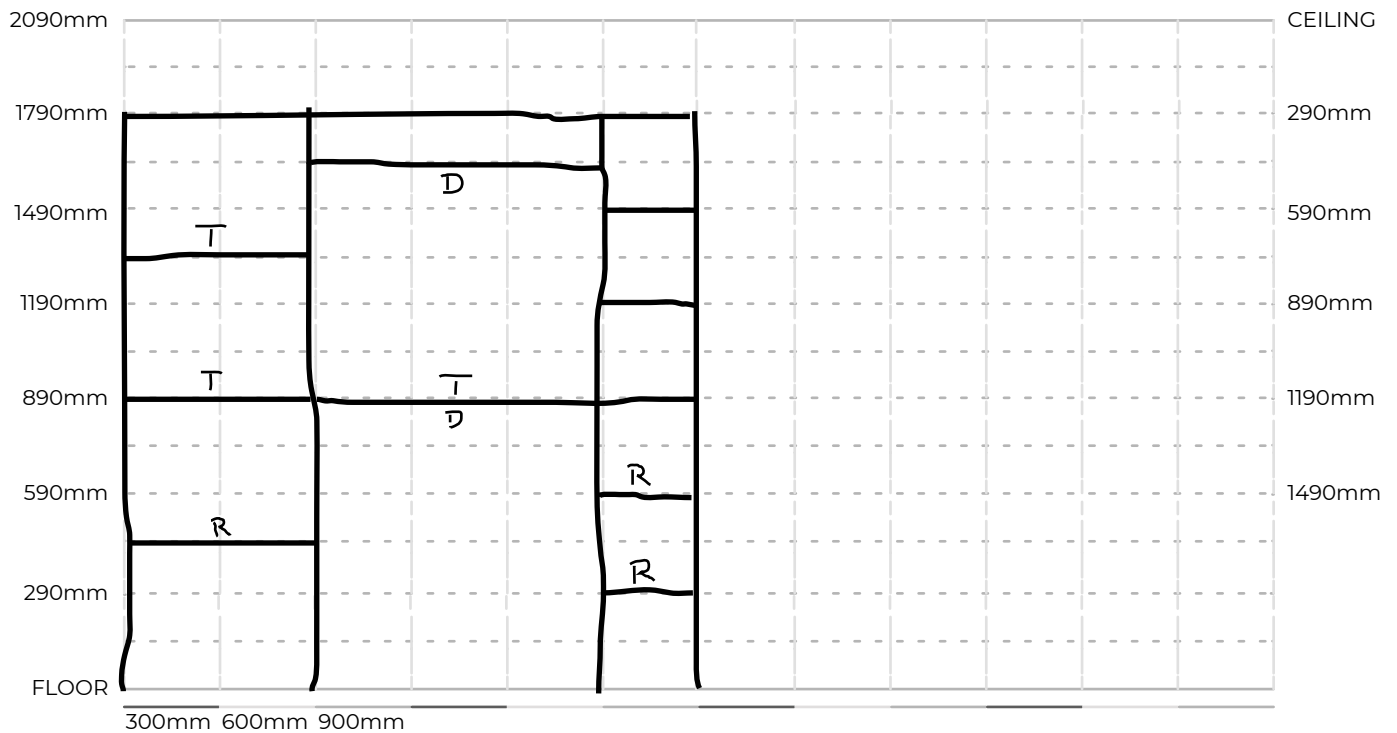
Aged Bronze

Blackened Brass

## 3 HEIGHT

## 4 BAYS

Sketch your elevation on the grid below indicating the height, number of bays and number of shelves.



## 5 SHELVES

MATERIAL TYPE - One shelf type per Maddox configuration

ALUMINIUM  
PC - Textured Black

GLASS  
Frame matched

ACCESSORY - Note position on sketch with code in brackets

Rack (R)

One Rail Shelf (O)

No Shelf (NS)

Top Shelf Fence (T)

Drinking Glass Rack (D)

Bottom Rail (B)

\* Our metals are all living finishes. Find out more here - [savagedesign.com.au/portfolio/living\\_finishes/](http://savagedesign.com.au/portfolio/living_finishes/)



**SHOWROOM** - Surry Hills  
**FACTORY** - Fairfield  
New South Wales, Australia

[hello@savagedesign.com.au](mailto:hello@savagedesign.com.au)



**S VAGE DESIGN**

**ENGINEERED BEAUTY**  
**SINCE 1910 / SYD - AUS**