

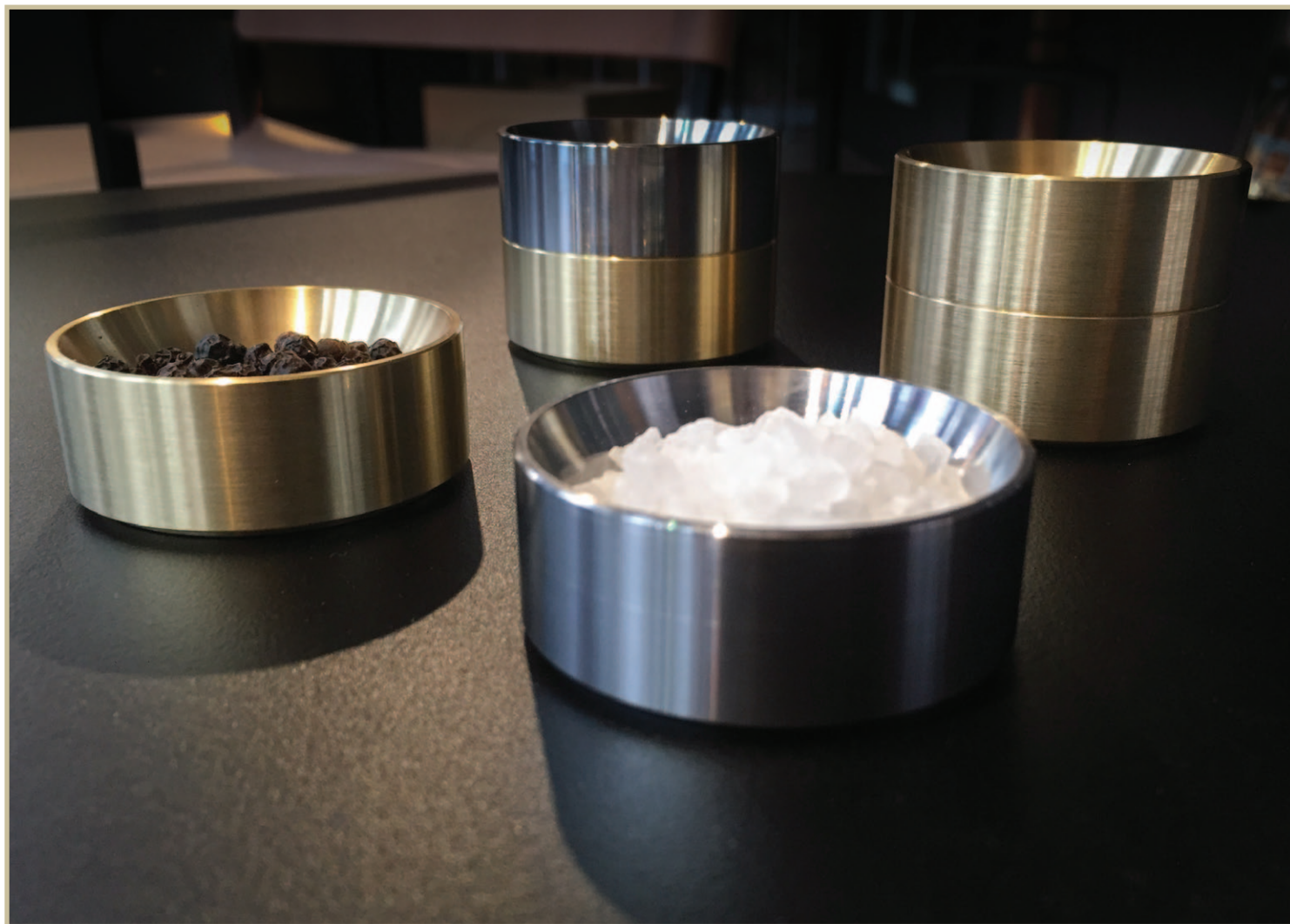
Crystal dish





Crystal dish

This minimal table dish, designed to hold salt, pepper, sugar or other small condiments, is finely machined to be the jewellery for any table. Made from solid material the dish is stackable for storage with or without contents inside.



Crystal dish

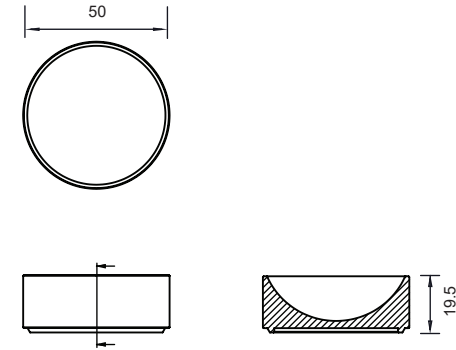
Material

Brass
Stainless Steel

Weight

170g

Dimensions



Care Instructions

Brass - Use warm soapy water with a soft cloth.

DO NOT use abrasives

This is raw brass and will patina. Use Brasso to bring back shine

Stainless Steel - Use warm soapy water with a soft cloth.

DO NOT use abrasives

This is raw stainless steel

Raw materials

This product is made from raw material and is prone to aging