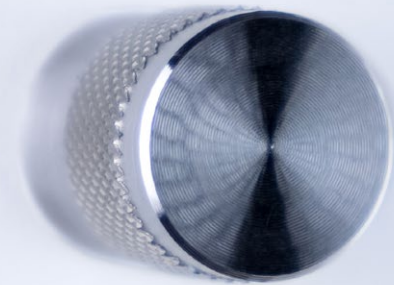
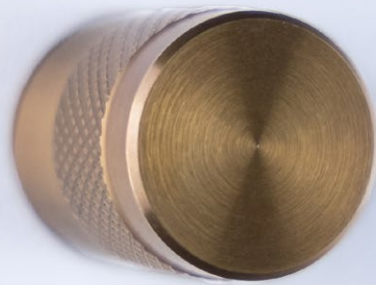
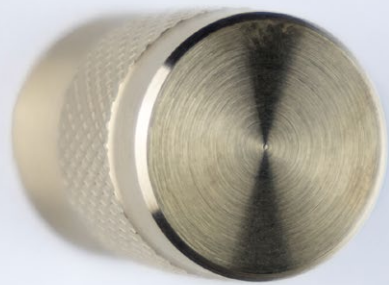




### DAVE DOOR PULL

After making practical componentry for years we have taken the knowledge of knurling for grip and put an aesthetical spin on it to make your standard door pull more rock and roll.

Turned from solid brass and stainless steel and left raw in order to age like your favourite pair of jeans. A quick polish however will turn your knobs back to new and crank your doors up to eleven. Our pre aged finish, aged bronze, is also available that will mature with time.



Brass (BR)

Aged Bronze (BO)

Blackened Brass (BB)

Stainless Steel (SS)

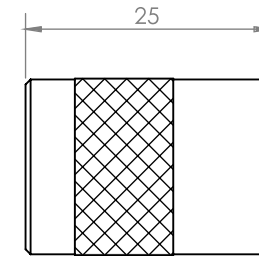
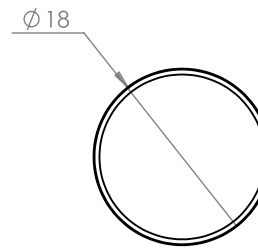
**MATERIAL**

Solid Brass\*  
Solid Stainless Steel  
Aged Bronze\*  
Blackened Brass\*

\* Living finish

**DIMENSIONS  
WEIGHTS**

50g approx.

**SUPPLIED**

1 x Pull / 1 x Screw (M4 x 25mm csk stainless steel)

Rear Fixing.

Screws provided suit doors / drawers 16mm - 18mm Thick.

**INSTALLATION**

Door or drawer -  $\varnothing 6$ mm hole.

**CARE INSTRUCTION**

Dust with a clean micro fiber cloth. Wipe down with a damp micro fiber cloth.

Do not use abrasives. Do not use harsh chemicals. Warm mild soapy water can be used on stubborn dirt.

Dry surface after cleaning with a clean cloth.

**LIVING FINISHES**

This product is made from raw material and will patina over time and with use. To find out more visit:

[savagedesign.com.au/portfolio/living\\_finishes/](http://savagedesign.com.au/portfolio/living_finishes/)