



### TAYLOR ENTRY DOOR RAIL

Made from premium materials of solid brass and marine grade 316 stainless steel, this entry rail offers substance and quality as the first contact point of entering the space beyond. Designed for both single sided and back to back pair configurations in two standard lengths.

The Taylor is part of a broader hardware family allowing you to carry that sense of substance and quality from the front door throughout the internal spaces.



Brass (BR)



Aged Bronze (BO)



Blackened Brass (BB)



Stainless Steel (SS)

**MATERIAL**

Solid Brass\*  
 Solid Stainless Steel  
 Aged Bronze\*  
 Blackened Brass\*

\* Living finish

**CONFIGURATIONS**

Single - 1 x rail / 2 x bush / 2 x screws / 2 x grub screws  
 Pair (back to back) - 2 x rail / 2 x thru bush / 4 x grub screw

To suit timber and metal doors 25mm - 50mm Thick.  
 For doors +50mm thickness contact Savage Design for custom fittings to order.

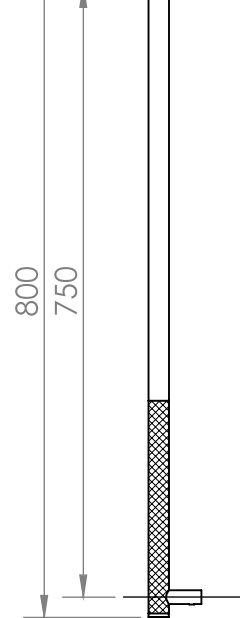
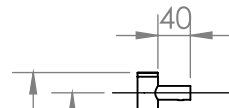
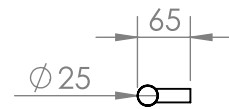
Glass doors 10mm - 16mm Thick.  
 Glass kit [sold separately] is required, please contact Savage Design for more information.

DDA compliant (Aus)

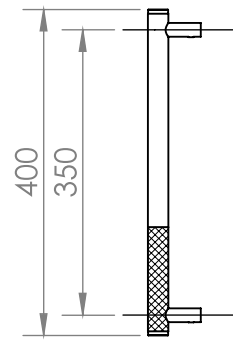
**DIMENSIONS  
 WEIGHTS**

**SINGLE**

3.4kg approx.

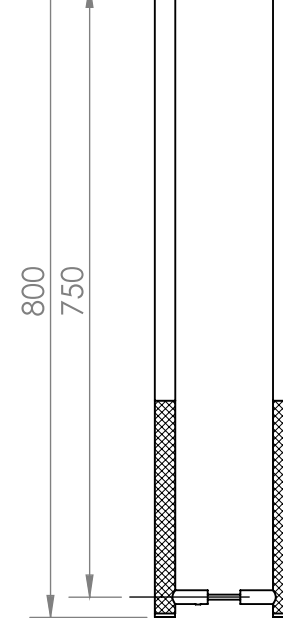
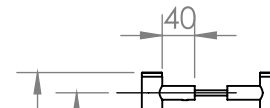
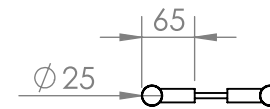


1.8kg approx.

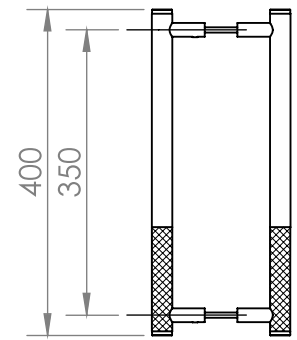
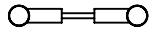


**PAIR**

7kg approx.



3.4kg approx.



**CARE INSTRUCTION**

Dust with a clean micro fiber cloth. Wipe down with a damp micro fiber cloth.  
 Do not use abrasives. Do not use harsh chemicals. Warm mild soapy water can be used on stubborn dirt.  
 Dry surface after cleaning with a clean cloth.

**LIVING FINISHES**

This product is made from raw material and will patina over time and with use. To find out more visit:

[savagedesign.com.au/portfolio/living\\_finishes/](http://savagedesign.com.au/portfolio/living_finishes/)

**INSTALLATION - SOLID DOORS**

**SINGLE**

Check screw length to door thickness. Different length screws may be required.  
Size - 8G STAINLESS STEEL

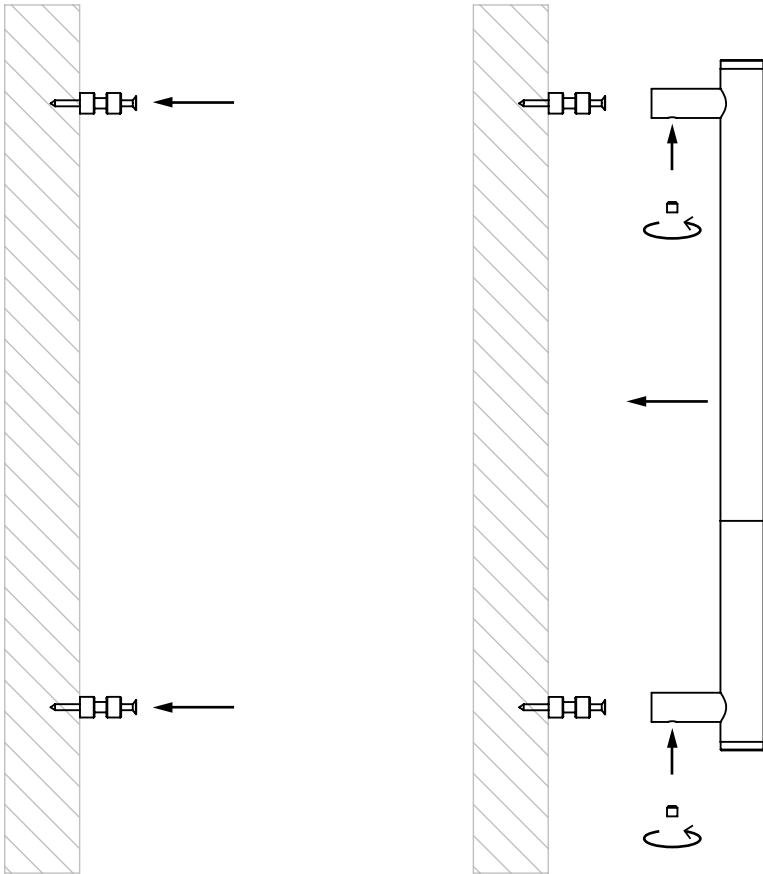
Step 1 - Measure and mark out hole centres

Step 2 - Screw fix bushes to door face.

Step 3 - slide handle on to bushes

Step 4 - Insert and tighten grub screw with allen key by hand.

**Do not use electric driver or drill**



**PAIR**

Glass doors - glass kit [sold separately] is required, please contact Savage Design for more information.

For doors +50mm thickness contact Savage Design for custom fittings to order.

Step 1 - Measure and mark out hole centres and drill a hole through the door

Timber & Metal door -  $\varnothing$  8mm hole

Glass door -  $\varnothing$  12mm hole

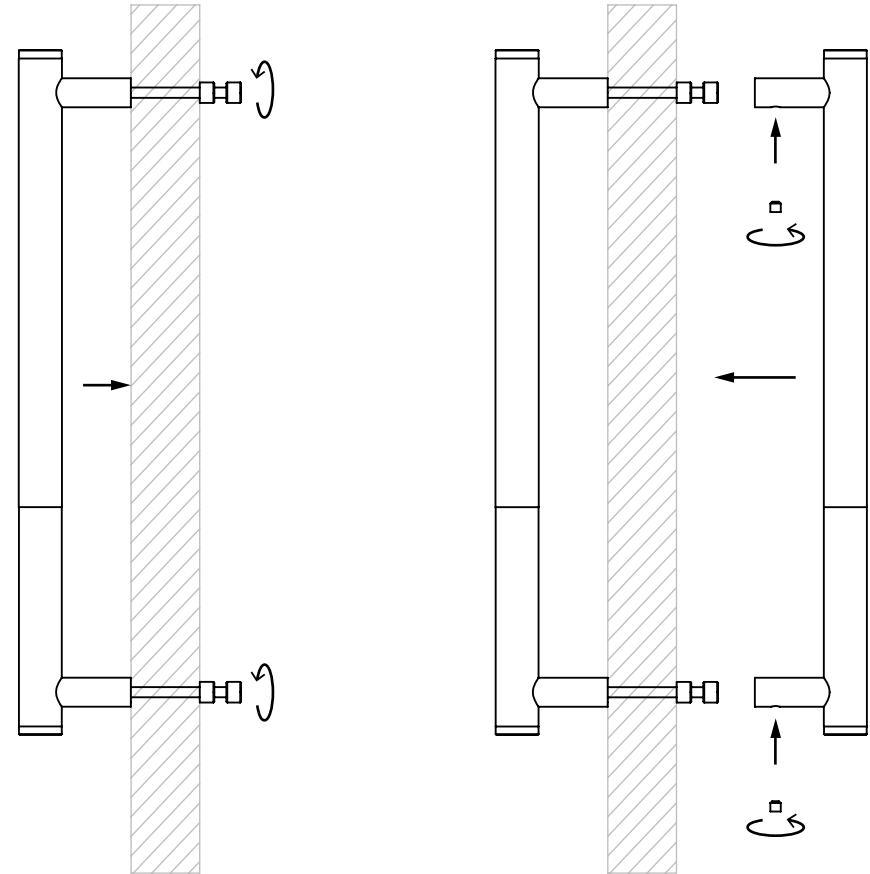
Step 2 - Insert and tighten connecting bush to outside handle with allen key by hand.

**Do not use electric driver or drill**

Step 3 - slide inside handle on to bushes

Step 4 - Insert and tighten grub screw with allen key by hand.

**Do not use electric driver or drill**

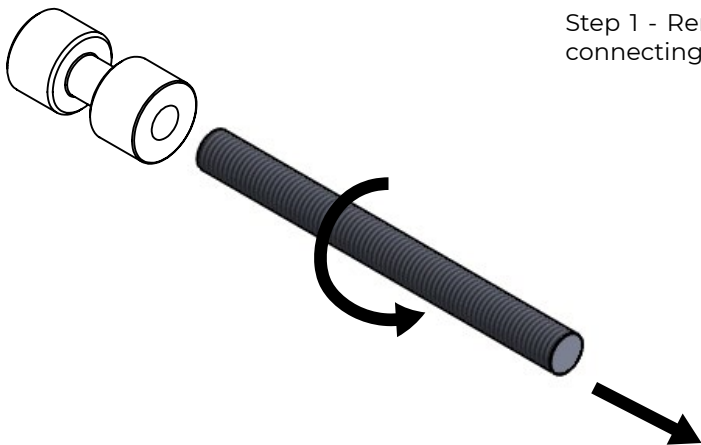


INSTALLATION - GLASS DOORS

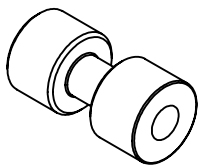
GLASS KIT - BUSH

Glass kit contains x4 nylon washers and x2 short all threads. You will need the connecting bush provided with the handle.

Step 1 - Remove all thread from the connecting bush provided.

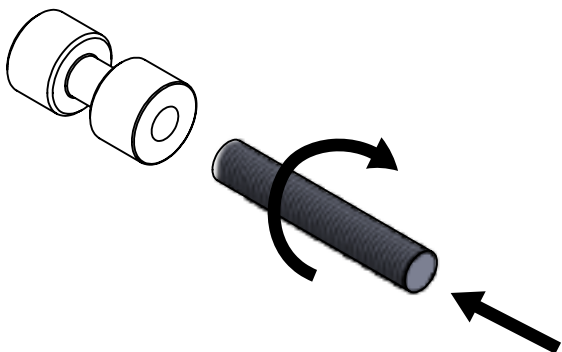


Step 2 - Keep bush head and discard longer all thread



Step 3 - Insert and tighten short all thread provided with glass kit  
**Do not use electric driver or drill**

Repeat on second connecting bush



GLASS WASHER POSITION

Glass kit is for doors 10mm-16mm thickness. Follow standard installation instructions but make sure nylon washers are in place in between the stanchions and glass as pictured below.

HOLE SIZE IN GLASS  
Ø 12mm

